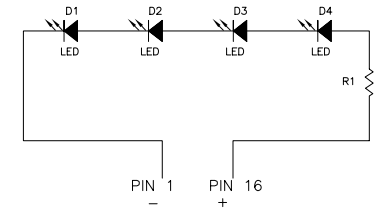
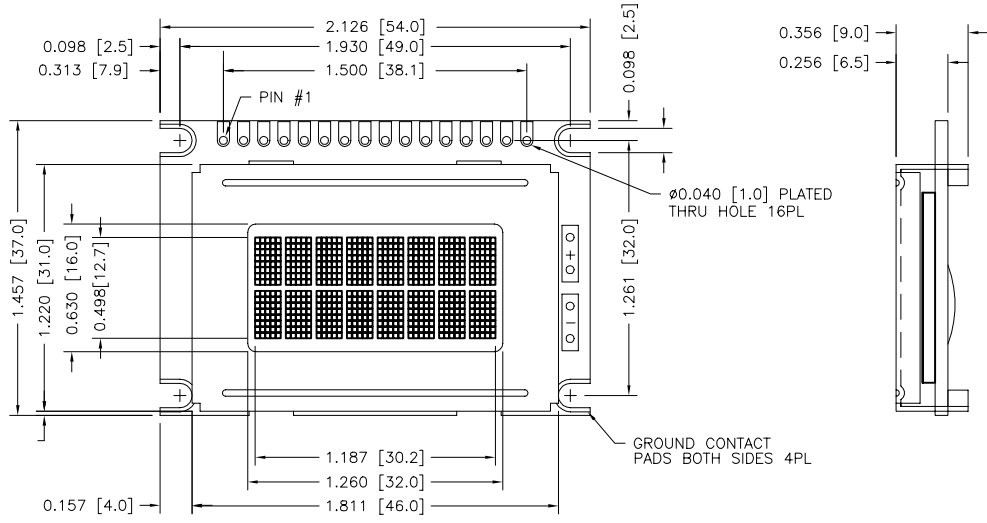
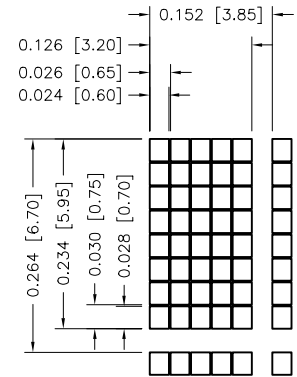
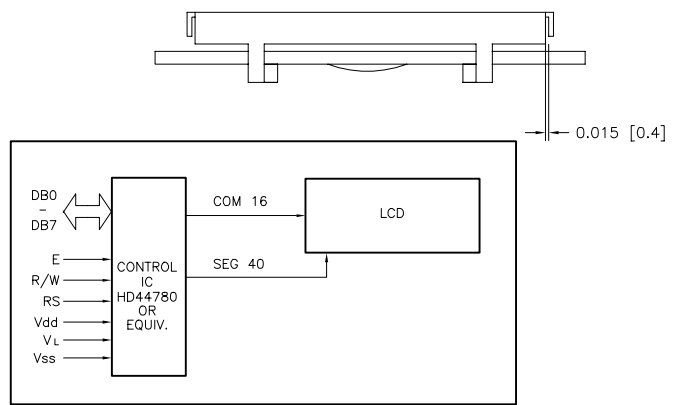


REV	DESCRIPTION:	BY	DATE
-	RELEASED	WS	
A	ECD#2478	SL	3/25/98
B	ECD#2645	LSM	12/04/98



LED BACKLIGHT CONFIGURATION
 FORWARD CURRENT 20ma @ 8.4V TYP.
 NOTE: R1 MAYBE INSTALLED TO ACCOMODATE OTHER VOLTAGE OPTIONS



CONNECTOR		PINOUT
PIN#	SYMBOL	FUNCTIONS
1	-	LED(CATHODE)
2	V _{SS}	0V POWER
3	V _{DD}	+5V SUPPLY
4	V _{LS}	
5	RS	H: DATA INPUT L: INSTRUCTION INPUT
6	R/W	L: WRITE H: READ
7	E	ENABLE SIGNAL
8	DB0	DATA BUS LINES
9	DB1	
10	DB2	
11	DB3	
12	DB4	
13	DB5	
14	DB6	
15	DB7	
16	+	LED(ANODE)

- NOTES:
 1. ALL DIMENSIONS IN INCHES [mm].
 2. TOLERANCE UNLESS OTHERWISE NOTED ±0.008 [0.2mm].
 3. REFER TO MODULE PRODUCT SPECIFICATION FOR SPECIFIC CONFIGURATIONS AND BILL OF MATERIALS

THIS DOCUMENT IS CONFIDENTIAL PROPRIETARY INFORMATION OF OCULAR CORPORATION AND SHALL NOT BE DISCLOSED OR COPIED OR USED FOR ANY PURPOSE OTHER THAN FOR WHICH IT IS SPECIFICALLY FURNISHED WITHOUT THE PRIOR WRITTEN CONSENT OF OCULAR CORPORATION.

UNLESS OTHERWISE NOTED:		ENGR MANAGER:	DATE:	3/19/98	
UNITS	DECIMAL	DWN BY:	WS	DATE:	3/19/98
INCHES [mm]	.X [X.] ±0.02 [0.5] .XX [X.] ±0.008 [0.20] .XXX [X.] ±0.005 [0.13]	DRAWING TITLE:			DM0822
ANGLES	PLATED THRU HOLES +0.003 [0.08] NON-PLATED THRU HOLES -0.001 [0.03]	DRAWING No.:		0822MOD	REV: B
THIRD ANGLE PROJECTION	±0.5°	SCALE:	SHEET: 1 OF 1		